



**McClellan AFB
HAZARDOUS WASTE
MANAGEMENT TRAINING**

- **Michael A Roberts, Instructor**
- **Robert A Evangelista, Instructor**

HAZARDOUS WASTE MANAGEMENT TRAINING

- Resource Conservation and Recovery Act
- Identification of Hazardous Waste/Material
- Container Use, Marking and Labeling
- Accumulation Point Management
- Waste Turn-in Procedures
- Personnel Safety
- Spill Prevention and Response to Emergencies
- Waste Minimization

**RESOURCE CONSERVATION
AND RECOVERY ACT
(RCRA)**



Mandatory Training

***Two general training components
Required by the Resource Conservation
and Recovery Act (RCRA 40 CFR 265.16)***

Personnel must be trained:

- *How to perform their duties in a way that ensures the installation's in compliance with applicable laws and regulations.*
- *How to respond to emergencies involving hazardous waste.*

RCRA

- **Resource Conservation and Recovery Act;**
 - 42 United States Code, Section 6901-6992.
 - Is the primary law that effects hazardous waste regulations!
 - RCRA is a Federal Law, But it is administered by in this case the State of California.



RESOURCE CONSERVATION AND RECOVERY ACT

- **Objectives.-- To promote the protection of health and the environment and to conserve valuable material and energy resources by.**
- **Provide Technical and Financial assistance to States for the development of improved methods of collection, separation, and recovery of solid waste.**
- **Provide training grants in occupations involving the design, operation, and maintenance of solid waste disposal**

Objectives Continued

- **To assure that Hazardous Waste management practices are conducted in a manner which protect human health and the environment**
- **To minimize the generation of Hazardous Waste by encouraging process substitution**
- **To establish a viable Federal/State partnership to carry out the purposes of this Act**

HAZARDOUS WASTE MANAGEMENT SYSTEM



- **Regulated Persons & Activities**
 - generators of HW
 - transporters of HW
 - owner/operators of treatment, storage, and disposal (TSD) facilities

HAZARDOUS WASTE MANAGEMENT SYSTEM



- 2. Basic Rules
 - program regulates HW
 - all regulated persons must give notice to EPA
 - illegal to treat, store, or dispose of HW w/o permit
 - manifest must accompany shipment
 - problem solving
 - rules apply to each activity

California Code of Regulations



- **Title 22 66265.16 Personnel Training**
 - **Hazardous Waste Management Procedures**
 - **Emergency Response Procedures**



- **The State regulates, inspects, and enforces.**
 - **There are three types of enforcement:**
 - a. Administrative.**
 - b. Civil.**
 - c. Criminal.**

- Administrative is when the Air Force is ordered to
- doing something.



- A civil penalty requires the Air Force to pay money (out of O&M funds).



- Criminal penalties puts you in jail!





- **How to stay out of jail:**
 - **don't lie; don't cheat and Don't be stupid (dumping stuff in drains, etc.).**

TRACKING OF HAZARDOUS WASTE

Process

Waste Stream Characterization

Container

Satellite Accumulation/ Point Staging Area

Central Staging Facility

Defense Reutilization and Marketing Office

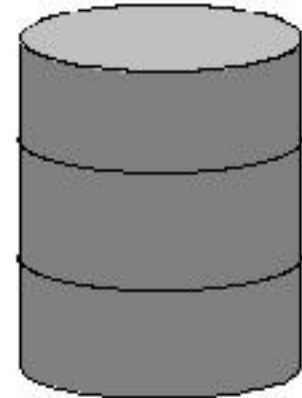
Treatment and Disposal Facility

IDENTIFICATION



- **IS IT HAZARDOUS**
 - **LABEL OR CONTAINER INFORMATION**
 - **MATERIAL SAFETY DATA SHEETS (MSDS)**
 - **STOCK NUMBERS**
 - **TECHNICAL ASSISTANCE**
 - » **EMP**
 - » **ANALYTICAL SUPPORT**

Hazardous Material



- **Hazardous Material:**

- Substance or a combination of substances which because of its Quantity, Concentration, Physical, Chemical, or Infectious characteristics

Can cause or significantly contribute to mortality or serious irreversible illness or poses a hazard to human health or the environment.

Hazardous Material (Cont)

- Within it's specified shelf life
- Used for it's originally intended purpose



Hazardous Material or Waste?

- **A material is a waste if it's:**
 - Mislabeled
 - Not adequately labeled (**Can be properly labeled within 10 days**) of discovery.
 - Packed in deteriorated or damaged containers (**Can be repacked within 96 hours**) of discovery.

 - **Hazardous Waste**
 - IF not useable for intended purpose intended

Hazardous Waste (Cont)

- **RCRA** Listed
- Listed in Chapter 11, Appendix X, Title 22 (**If listed, presume Hazardous** Unless proved otherwise)
- If neither use nor reuse is intended and it will be discarded. This includes **recyclable material**
- This does not include medical waste

Hazardous Waste

CHARACTERISTIC

TOXIC -TCLP test
CORROSIVE - pH < 2 or > 12.5
IGNITABLE - FP < 140 degrees
REACTIVE - Violent reaction

LISTED

U AND P - Toxic and Acutely Hazardous Waste
K - Specific sources
F - Non-specific sources

Process**Resulting Waste****Plating Operations****Cyanide solution
Acid and alkali solution
Heavy metals (lead,
cadmium, chromium)*****Degreasing Operations******Solvents (111 - Trichloroethane
and MEK)
Heavy Metals*****Aircraft Depainting****Bead blast with heavy metals
Paints
Solvents
Empty Containers
Contaminated Rags**

Process (Cont)**Resulting Waste****Photo and X -ray****Silver****Vehicle Maintenance****Oil
Antifreeze
Oily rags****Other (general)****Batteries
Waste Oil
Asbestos****DON'T FORGET SELF-HELP ITEMS**

WASTE STREAMS

- **Assemble relevant information including MSDSs used in the process or for the product**
- **Prepare hazardous waste profile sheet**
- **Attach supporting documentation**
- **Generating supervisor must sign and Environmental Coordinator must review and sign**
- **There are some Base Wide Waste Streams Available**



WASTE STREAMS

(Cont)

- **Submit to EMPO with attached documentation**
- **EMP will sample if required**
 - They will also complete remaining two sections of waste profile form and assign MCAFB #
- **Must be updated annually or as process/chemicals change**

GENERATOR'S PORTION

- MCAFB _____ Haz Waste Profile

Waste Generating Process:

Waste Generation Location (Bldg):

Waste Composition:

Chemical Components , Concentration,
Range

Estimated Volume

Frequency:

Type of Shipping Container

Generating Supervisor:

Environmental Coordinator:

EM'S PORTION

- **Physical State: Solid, Liquid, Semi solid, Gas, Empty**
- **Hazard : Ignitable, Corrosive, Toxicity, Reactive, Extremely Hazardous**
- **EPA Waste Number, State Waste Number**
- **Proper Shipping Name**
- **Hazard Label**
- **DOT Specification, Drum Size, Disposal To:**
- **MCAFB Waste Stream Number**
- **CLIN**
- **Verified by EM**

- **What does a hazardous waste container, marker and label look like?**

Accumulation Point Management

- **Satellite**
- **Staging Area**

Management Requirements:	Satellite	Staging
Containers in Good Condition	*	*
Incompatible Waste Separated	*	*
Waste Accumulation Time (days)	70	70
Waste Accumulation Log	*	*
Markers Complete and Correct	*	*
Flammable Containers Grounded (filling)	*	*
Containers on Pallets or Racks	Optional	*
Inspection Check List	No	*
Personnel Training	Less	More
Training Documentation	Less	More
Spill prevention and Response Plan	Optional	*
Berms, Floor Sealed	No	*
On Site Spill Control Equipment	Optional	*
Specified PPE	*	*
Spill Log	No	*
Segregate Waste From Material	*	*

AQUISITION AND TURN-IN OF CONTAINERS

- **Call CSF (3-1317 or 3-4022) to request prelabeled drums(s)**
- **PROVIDE THE FOLLOWING INFORMATION**
 - **Name, Building, and Phone #**
 - **Waste Stream**
 - **Type/Size of container**
 - **Quantity**
 - **Number of drums pickup**
 - **You can pick up your own containers**

Generators Responsibility

- * To track waste***
- * Request hazardous waste pickup
(within **70** days for McClellan)***
- * Reorder new containers***
- * Assure containers and labels
are correct***



CSF Refusal of Pickups

- Improperly sealed
- Evidence of spillage
- Unsound container
- Mixed waste stream on pallet
- Comingled waste
- Empty containers
 - Sealed
 - 'E' waste stream
 - Stored upside down



Hazardous Material Turn-In

- **Is MSDS the one for the material (same manufacturer, item name, number)**
- **Material labeled with an OSHA compliant label or DD Form 2522**
- **Is material in good containers and condition**
- **Prepared DD Form 1348-1 with milsbill and hin (help provided by DRMO or EMP personnel)**
- **Call DRMO at extension 3-4150**

PERMITTING

AB 1772 Established Tiered Permitting (1992)

- **2 Off-Site**

Full Permit

Standardized Permit

- **3 On-Site**

Permit By Rule (PBR)

Conditional Authorization (CA)

Conditional Exemption (CE)

CE Specified Waste Stream

Tier Determination

- Type of waste treated
- Treatment technology
- Monthly volume treated

Who Will Inspect Me?

- EM
- DTSC
- COUNTY

Are There Fines?

- **YOU BET THERE ARE!**

- **Guidance Manual & Policy Letters**

COMPLIANCE INSPECTIONS

**Environmental Compliance Inspections (ECIs)
Conducted Quarterly by EMPC**

**Air Compliance Inspections (ACIs)
Conducted annually by EMPC**

COMPLIANCE INSPECTIONS (Cont)

- **County**
- **Department of Toxic Substances Control
(DTSC)**

conducted annually

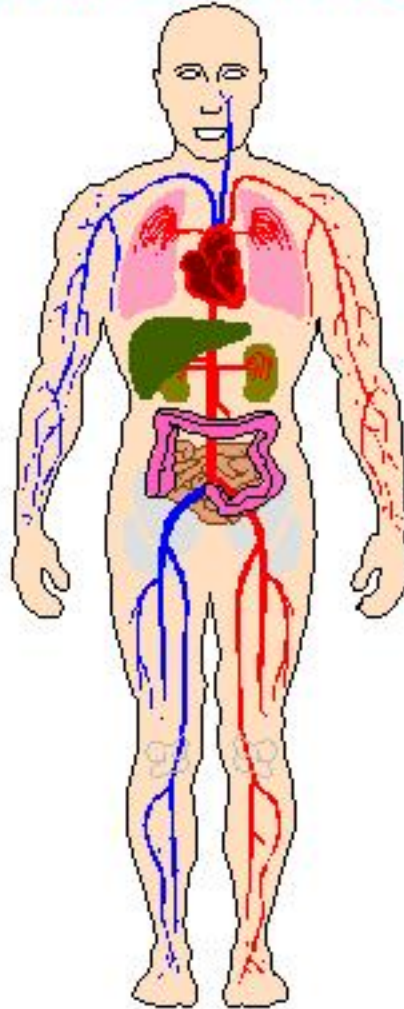
WHO TO CALL FOR QUESTIONS

- YOUR ENVIRONMENTAL COORDINATOR
- COMPLIANCE 3-0228
- HAZARDOUS WASTE 3-2517
- CSF 3-1317
- DRMO 3-4150

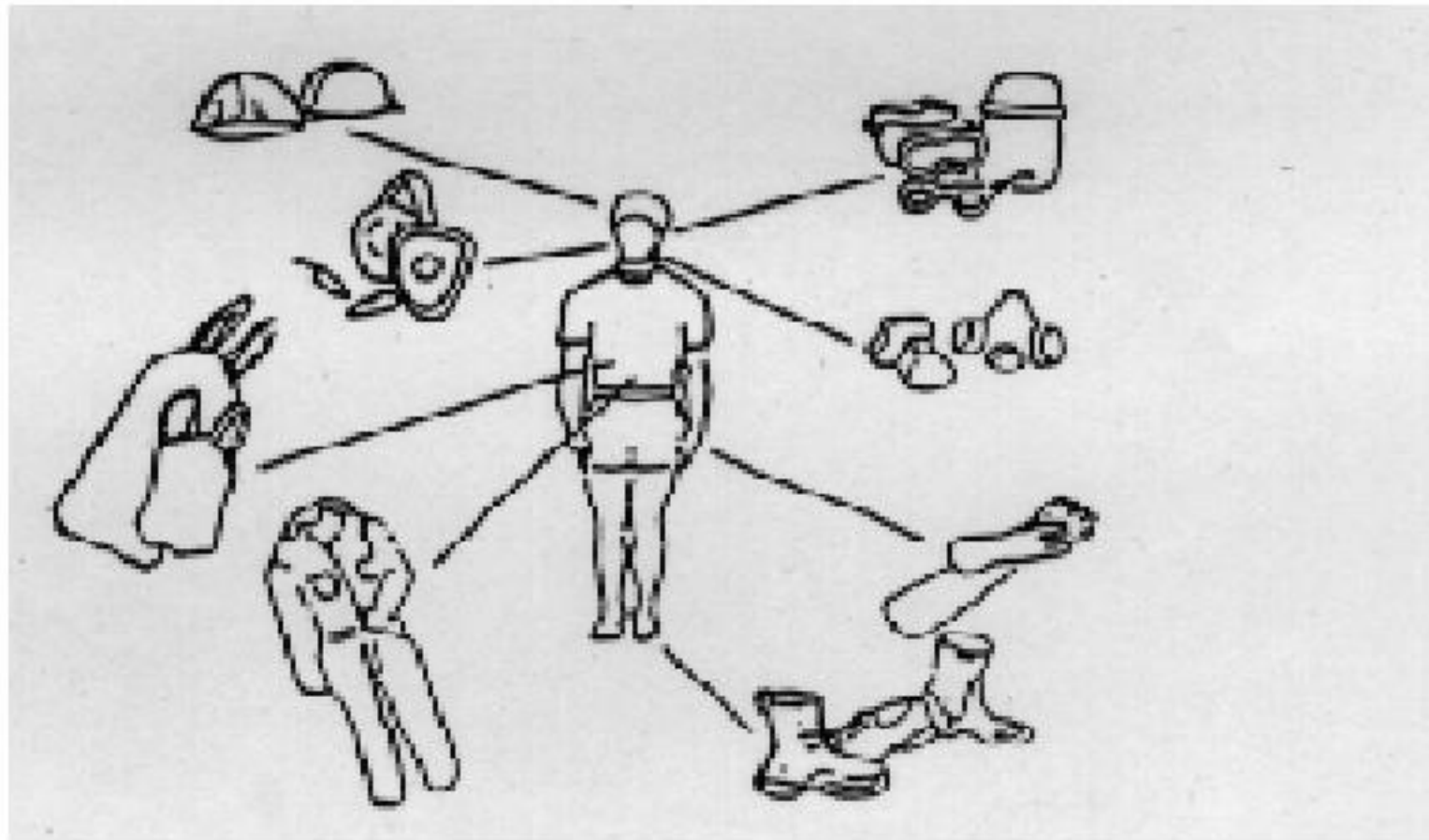
PERSONNEL PROTECTION



PERSONNEL PROTECTION



PERSONNEL PROTECTION



PERSONNEL PROTECTION



PERSONNEL PROTECTION

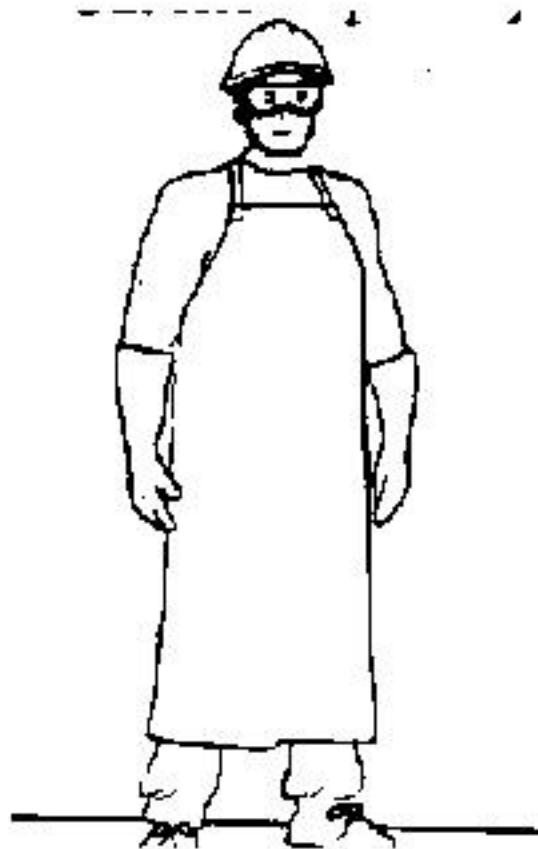


PERSONNEL PROTECTION



3.

PERSONNEL PROTECTION



SPILL PREVENTION & RESPONSE TO EMERGENCIES

*Michael A. Roberts
Environmental Support Center (EMO)*



30 July 1990

Environmental Planning

SPILL PREVENTION AND RESPONSE

This regulation sets forth procedures for oil and hazardous substance spill prevention and response. It includes the requirements of various Federal, state and local laws and regulations, and AFM 19-1. It applies to all Sacramento Air Logistics Center (SM-ALC) organizations, tenant units and contractors engaged in MacLellan Air Force Base activities.

1. REFERENCES.

- a. AFM 19-1, Pollution Abatement and Environmental Quality
- b. AFM 19-8, Environmental Protection Committee and Environmental Reporting
- c. MCABR Hazardous Waste Management Plan 19-1
- d. MacLellan Air Force Base Disaster Preparedness Office (DM), Operations Plan (OPDM) 355-1
 - e. 40 CFR 142
 - f. 40 CFR 264 and 265
 - g. 40 CFR 764
 - h. 49 CFR 171, 172, and 173
 - i. AFOSH Standards 127-58 and 127-63
 - j. AFM 85-46, Maintenance of Personnel System
 - k. J.G. 428-1-23
 - 1. Sacramento County Code, Chapter 6.36
 - 2. HFA Flammable and Combustible Liquids Code
 - a. 40 CFR 300 and 302
 - b. Title 22, California Code of Regulations, Chapter 30, Article 30
 - c. Title 19, California Code of Regulations
 - d. 29 CFR 1910.120

2. SCOPE OF SPILL PREVENTION AND RESPONSE. Accidental spills of hazardous substances may occur at any time. This regulation gives guidance for a dynamic spill prevention and response program. It gives detailed guidance for accurate spill reporting, accurate organizational respon-

sibilities, and describes spill prevention requirements. It further mandates that Environmental Management (EM) develop a Base Spill Prevention and Response Plan. The plan includes spill response guidance for base spill response personnel, off base reporting requirements, and other information required by various Federal, state and local laws and regulations.

3. DEFINITIONS.

- a. Environment. Navigable waters, other surface water, groundwater, drinking water supply, land surface, or subsurface strata, or tribes air.
- b. Hazardous Substance. Any substance that may cause bodily injury, illness or death to a person or harm the environment.
- c. Oil. Oil of any kind or in any form. It includes, but is not limited to, petroleum, fuel oil, JP-4, JP-5, sludge, oil refuse and oil mixed with wastes other than dredged spoils.
- d. On-Base Commander (OBC). The OBC is the base official authorized to coordinate and direct base spill response activities. The 2852 Air Base Group Commander (2852 ABG/CG) or designated alternate is the OBC. During initial response, the responding Fire Team leader is the OBC. The OBC will communicate with the Disaster Response Force as defined in OPM 355-1, either the base spill team leader or supervisor of the organization responsible for the spill in perform spill cleanup.
- e. Potential Spill Site. Any site where a hazardous substance could, during a 24-hour period, have a spill of sufficient magnitude to be a reportable quantity.

f. Reportable Quantity. A hazardous substance spilled into the environment that requires reporting to Federal spill agencies.

Substitute SM-ALC-MCABR 19-2, 2 Feb 1988
[See Signature Page for Summary of Changes]

No. of Printed Pages: 12

CDR: MII (William Labinsky)

Approved by: Paul G. Brunner

Writer-Editor: Marilyn F. Eddy

Distribution: T; D: HQ AFLC/DEV

ADD'NS
AB 300
107-90
eli

EMERGENCY RESPONSE



HAZARDOUS WASTE MANAGEMENT SUMMARY

- Resource Conservation and Recovery Act
- Identification of Hazardous Waste/Material
- Container Use, Marking and Labeling
- Accumulation Point Management
- Waste Turn-in Procedures
- Personnel Safety
- Spill Prevention and Response to Emergencies
- Waste Minimization

SPILL PREVENTION & RESPONSE TO EMERGENCIES

- Prevention is the Key
- Emergency Response Procedures for Spills
- Levels of Training
- SGB Role

